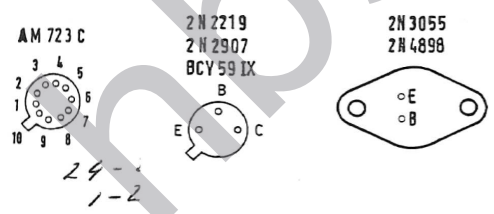


52.1360.820.00
zu jeder Schaltteilnummer 820 add.

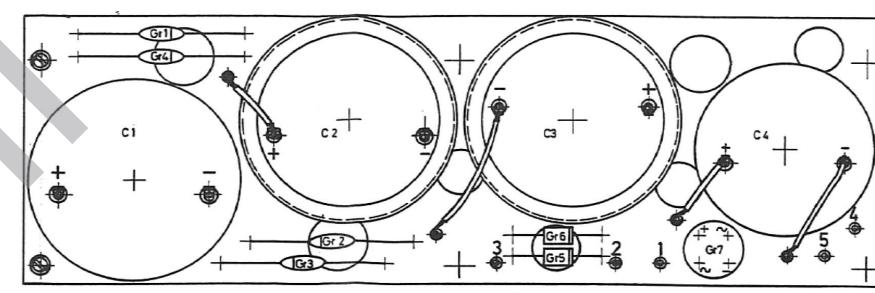
52.1360.850.00 zu jeder Schaltteilnummer 850 addieren

zu jeder Schaltteilnummer 800 addieren

Meßpunkt
Test Point
↑

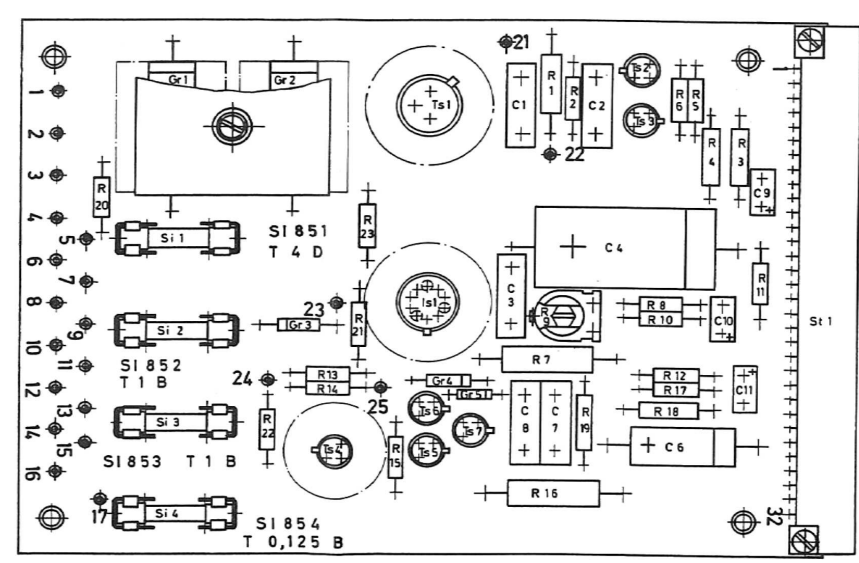


Zu jeder Schaltteilnummer ... addieren
Add ... to each components number



52.1360.820.00

Bestückungsplan/ Printed Circuit Board



52.1360.850.00

Bestückungsplan/ Printed Circuit Board

Stromlaufplan Netzstromversorgung NS 1500
Circuit Diagram of Mains Power Unit NS 1500

mod hb9aik - vk6bqd

